

ABOUT THIS GUIDE

This guide introduces the external hardware of VSkyCube c10X series devices and includes instructions for installation of a c10X device in a 19" equipment rack.

INTRODUCTION

VSkyCube Hyper-converged Infrastructure (HCI) Solutions span multiple appliance models which integrate software-defined compute, storage, and networking in a single box. Compute and/or storage capacity can be easily scaled out to meet demand by adding one or multiple additional appliances to existing deployments, allowing administrators to quickly customize their VSkyCube solution to meet compute-intensive, storage-intensive, as well as workloads with a balanced mix of compute-storage requirements.

The VSkyCube c10X series models are single server node, 1U rack-mount x86 server appliances optimized for compute-intensive workloads. Each node supports:

- One (c102) or Two (c100) Intel Xeon processors*
- 64 (c102) to 256 (c100) GB memory*
- Four 3.5" drive bays*
- Dual 10GBASE-T or 10G SFP+ (c100 only) network ports
- 650W AC redundant power supply (Platinum)

* Processor, memory, and disk specifications may be different depending on customer order preference.

VSkyCUBE c10X SERIES

The VSkyCube c10X Series models include:

- VSkyCube c100x 1U server (two 10G SFP+ ports)
- VSkyCube c100t 1U server (two 10GBASE-T ports)
- VSkyCube c102t 1U server (two 10GBASE-T ports)

UNPACKING

Carefully unpack the VSkyCube c10X shipping package and make sure all of the following items are included:

- VSkyCube c10X appliance, preloaded with VSkyCube hyperconverged infrastructure operating software
- Two 1.5 m (4.9 ft) power cords
- Sliding rail assembly for rack mounting and associated hardware
- This Hardware Guide (printed)
- Utility CD, which contains:
 - VSkyView, the VSkyCube HCS Management Software
 - VSkyView & VSkyCube Quick Start Guide



Note

The VSkyCube User Guide is available for download from the Promise website. www.promise.com

FRONT PANEL HARDWARE



DISKS 1 AND 2

- 2 x SAS HDDs mirrored hardware RAID1
- Preloaded with VSkyCube hyperconverged infrastructure operating software
- System volume: for Virtual Machine (VM) instances

Disk 3

- 1 x SSD for data cache or 1 x SAS HDD for data volume

Disk 4

- 1 x SAS HDD for data volume

LED FUNCTION

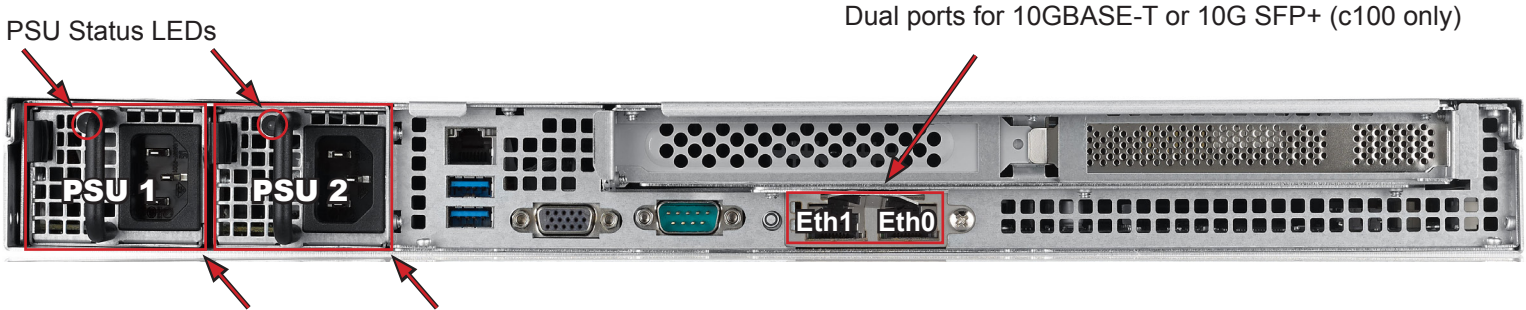
See the table on the back page for a description of LED function and behavior.

Disk LEDs

The four disk carriers include LEDs for Power (top) and Activity (bottom).

The LEDs are located on the right end of the front of each carrier

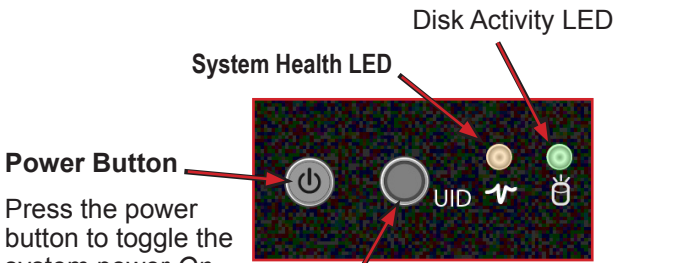
BACK PANEL HARDWARE



Two Power Supply Units (1+1 Redundant PSU)

VSkyCube c10X models have redundant PSUs in a 1+1 configuration. Only one of the PSUs may be removed while the server is running, as the c10X models require at least 1 functional PSU to be installed and connected to AC power for operation. Both PSUs must be installed, connected and functioning to ensure redundancy.

Close up view of controls and LEDs on front



Power Button
Press the power button to toggle the system power On or Sleep mode.

UID Button and LED

Press the UID button to toggle the front panel Unit Identifier (UID) LED and the baseboard UID LED on and off. Use this for locating a specific device in a rack.

CONNECT POWER SUPPLIES

After installing the server in an equipment rack (see back page for instructions), use the power cords shipped with the device to connect both power supplies to a suitable power source.



Important

DO NOT power on the VSkyCube c10X. Please read the *Promise VSkyView and VSkyCube Quick Start Guide* and follow the setup instructions before powering on the system.

LED Information		
LED	Status	Description
Power	Steady Green	Power is on.
	Off	Power is off.
UID	Steady Blue	System identifier function is active.
	Off	System identifier function is disabled.
System Health	Steady Red	System alert, system operation is not normal.
	Off	System operation is normal.
Front Control Panel Disk Activity	Blinking Green	One or more HDD are active (read/write activity).
	Steady Green	One or more HDD are connected.
	Steady Red	One or more HDD has failed.
	Off	No HDD are detected.
PSU Status	Steady Green	PSU is on and function is normal.
	Steady Amber	<ul style="list-style-type: none"> PSU module fault/protection in operating mode (failure, OCP, OVP, Fan Fail, OTP, UVP) AC power cord not connected
Power LED on Disk Carrier	Steady Blue	HDD is powered on.
	Off	HDD is not receiving power or no HDD installed
Activity LED on Disk Carrier	Steady Green	HDD is active.
	Blinking Green	Read/write activity in process on HDD.
	Steady Red	HDD has failed.
	Off	HDD is not receiving power or no HDD installed.

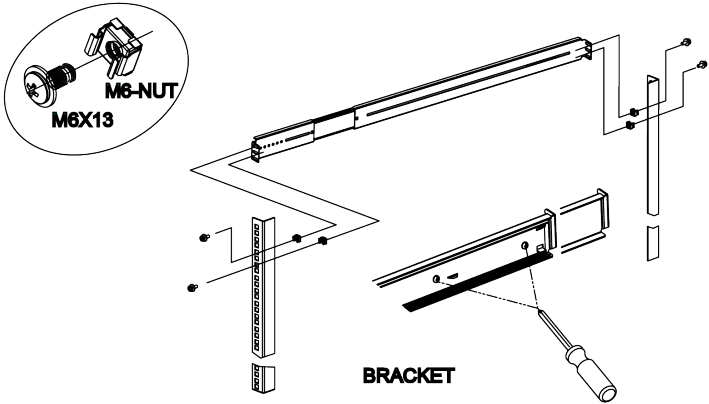
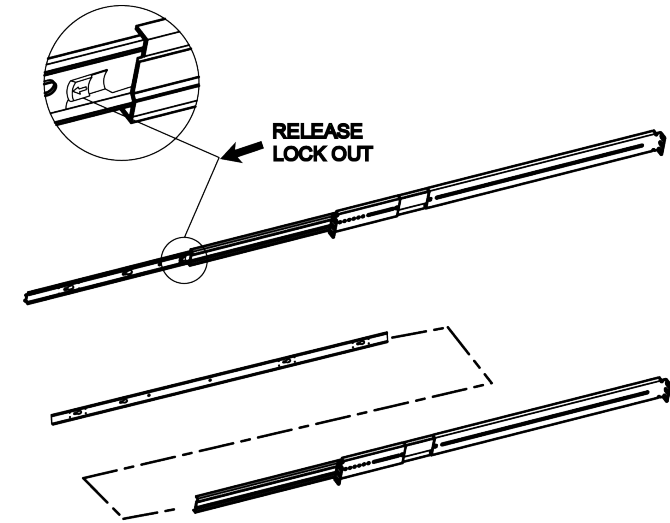
Enclosure Information

Product Dimension	710 mm x 430 mm x 43.5 mm	
Product Weight (including installed HDDs)	20.30 Kg	

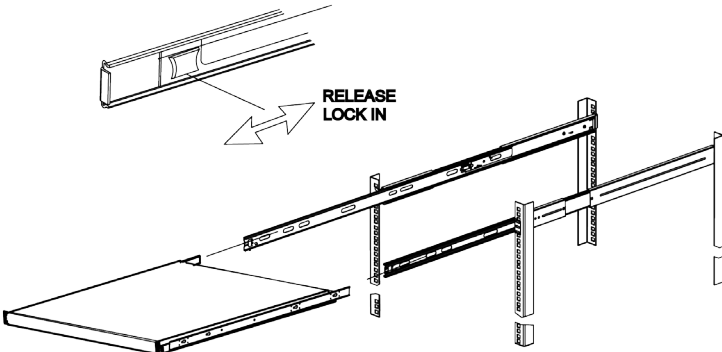
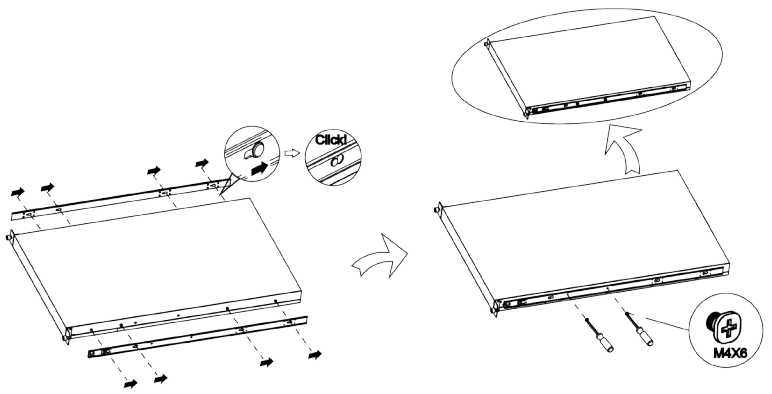
INSTALL IN RACK

VSkyCube c10X devices install in a standard 19” equipment rack using the mounting rails shipped with the device. Follow these steps to install the mounting rails in an equipment rack.

1. For both sliding rail assemblies, release and detach the inner member from the slide.
3. Fix the outer member of the rail assembly to the rack frame.



2. Attach the inner member of the sliding rail assembly to each side of the VSkyCube c10X device.
4. Carefully insert the VSkyCube c10X device to complete the installation.



CONTINUE TO DEPLOY VSKYCube c10X

After rack-mounting the VSkyCube c10X device, please follow the instructions in the VSkyView & VSkyCube Quick Start Guide (located on the Utility CD) to connect it to the network, power it on, and continue the deployment.