



## *Installation Guide for Windows*



## VCCI

この装置は、情報処理装置等電波障害自主規制協議会（VCCI）の基準に基づくクラスB 情報技術装置です。この装置は、家庭環境で使用することを目的としていますが、この装置がラジオやテレビジョン受信機に近接して使用されると、受信障害を引き起こすことがあります。

取扱説明書に従って正しい取り扱いをして下さい。



### **WARNING**

Use the power cord included with the Pegasus2.



### **WARNING**

**DO NOT** disconnect the Thunderbolt cable until you have completed the procedure to safely remove it. See “Safely Remove Pegasus2 from Windows” on page 23 for details.

# CONTENTS

ABOUT THIS GUIDE	1
SYSTEM REQUIREMENTS FOR WINDOWS	1
SUMMARY OF THE SETUP PROCEDURE	1
<b>PACKING LIST</b>	<b>2</b>
<b>HARDWARE</b>	<b>3</b>
<b>INSTALLATION</b>	<b>5</b>
STEP 1: DOWNLOAD SOFTWARE AND DRIVER	5
STEP 2: CONNECT THE PEGASUS2 TO YOUR WINDOWS COMPUTER	6
STEP 3: POWER ON PEGASUS2	7
STEP 4: INSTALL DRIVER	8
STEP 5: INSTALL SOFTWARE	11
STEP 6: FORMAT PEGASUS2 WITH WEBPAM PRO	14
<i>Format Pegasus2 with Windows 7</i>	15
<i>Format Pegasus2 with Windows 8</i>	19
STEP 7: CHECK FIRMWARE VERSION WITH WEBPAM PRO	23
<i>Updating Firmware</i>	23
<b>SAFELY REMOVE PEGASUS2 FROM WINDOWS</b>	<b>24</b>
SAFELY REMOVE PEGASUS2 ON WINDOWS 7	24
SAFELY REMOVE PEGASUS2 ON WINDOWS 8	25
<b>SHUTDOWN THE PEGASUS2</b>	<b>26</b>

---

## **ABOUT THIS GUIDE**

The Pegasus2 Installation Guide for Windows is intended to guide the user through the installation procedures to connect the device to a Windows computer, install the necessary driver and software and begin using the device. For more complete information about the device specifications, details of the system hardware and advanced administration features, please read the Product Manual.

References to “Pegasus2” throughout this guide apply to the Pegasus2 models R4, R6, R8 and M4 except where these models specifically mentioned.

## **SYSTEM REQUIREMENTS FOR WINDOWS**

The Pegasus2 hardware driver for Windows can be used on computers equipped with a Thunderbolt™ port running any edition of Windows 7 or Windows 8. The software, WebPAM PRO (web-based PROMISE Array Manager Professional), is also compatible with all Windows 7 and Windows 8 versions. WebPAM PRO is used for administration and management of the Pegasus2.

## **SUMMARY OF THE SETUP PROCEDURE**

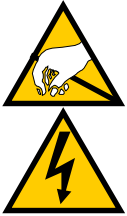
The setup process for Windows is summarized below.

1. Go to the Promise website and download the driver and software used for the Pegasus2.
2. Connect the Pegasus2 to your Windows computer with a Thunderbolt cable.
3. Connect the power cord and power on the Pegasus2.
4. Install the PROMISE RAID Controller driver from the downloaded files.
5. Install WebPAM PRO from the downloaded files.
6. Launch WebPAM PRO and format the Pegasus2.

# PACKING LIST

Check the shipping package to make sure you have the following items:

- Pegasus2 R4, Pegasus2 R6, Pegasus2 R8, or Pegasus2 M4
- Hard disk drives (four in R4 and M4, six in R6, eight in R8)
- Quick Start Guide
- Power cord
- Thunderbolt cable



## CAUTION

The electronic components within the Pegasus2 unit are sensitive to damage from Electro-Static Discharge (ESD). Observe appropriate precautions at all times when handling the Pegasus2 unit or its subassemblies.



## WARNING

The fan contains hazardous moving parts. Keep fingers and other body parts away.

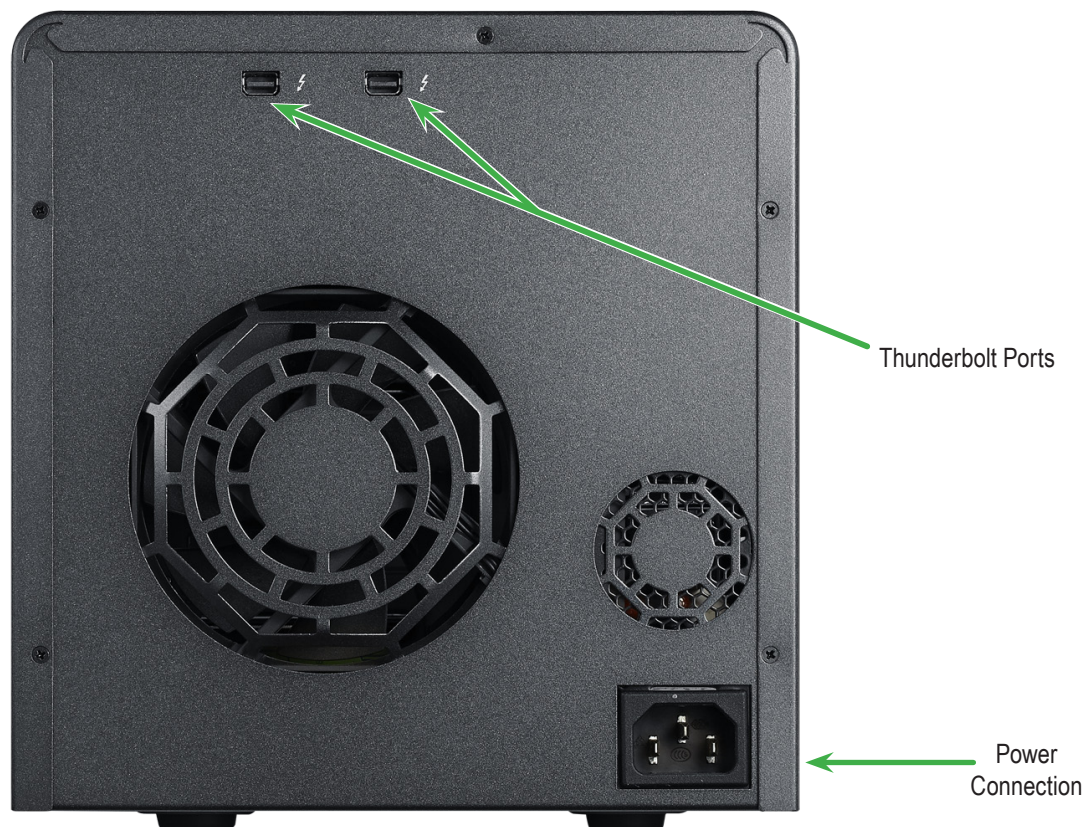
# HARDWARE

This section provides a brief introduction to the hardware of the Pegasus2. For the purpose of installation they are very similar.

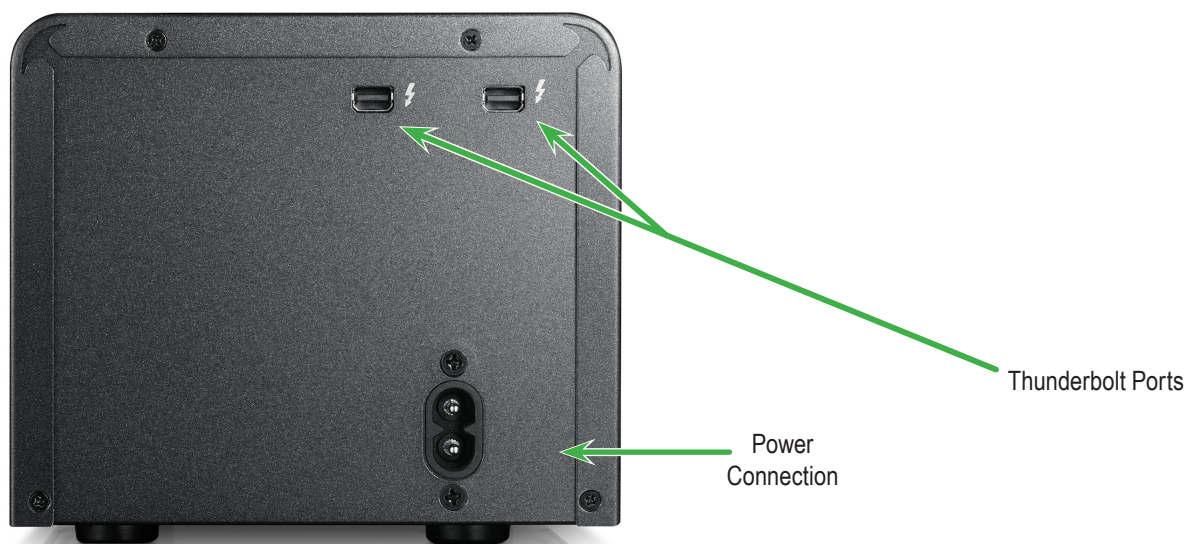
*Pegasus2 R4 front view. The R6, R8 and M4 are similar in appearance*



***Pegasus2 R4 back view. The R6, and R8 are similar, the R6 and R8 are taller***



***Pegasus2 M4 back view***



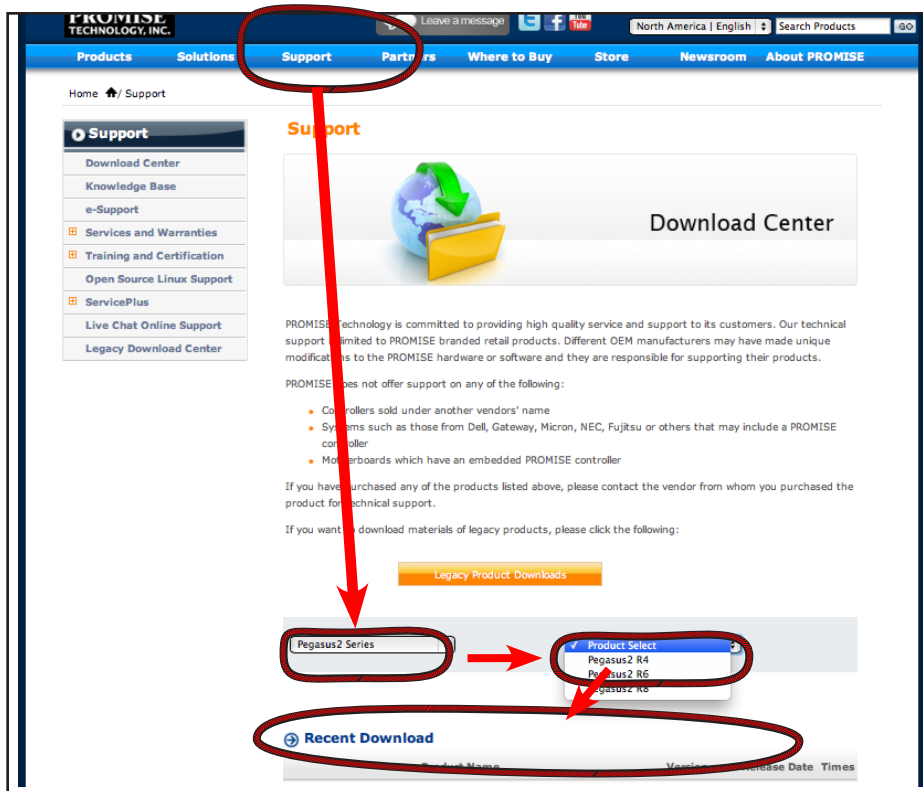
# INSTALLATION

Follow the installation steps to setup and begin using the Pegasus2.

## STEP 1: DOWNLOAD SOFTWARE AND DRIVER

Follow these instructions to download the software and driver installation files for Windows from the PROMISE website.

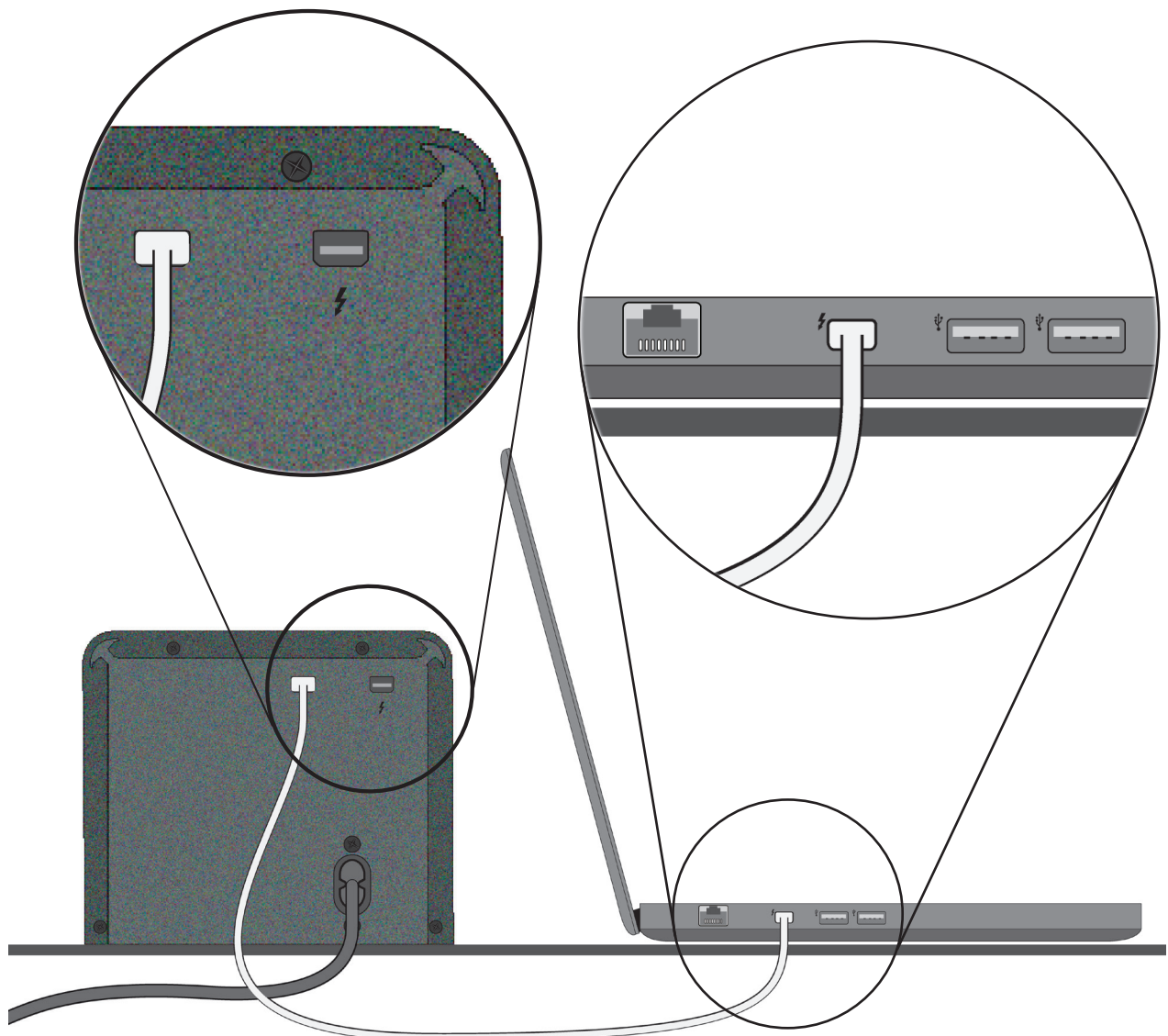
1. Go to the PROMISE website ([www.promise.com](http://www.promise.com)) and click on **Support** in the banner at the top of the web page, scroll down to **Download Center**.
2. In the **Download Center** page, scroll to find the **Pegasus2 Series** in the pull-down menu on the left side on the bottom of the menu. Then, in the pull-down menu on the right side, find **Pegasus2 Series** (the driver and software are the same for all models)
3. Under **Download search results**, the download links will be revealed below, click on the download links for **Pegasus2 driver for Windows** and **WebPAM PRO for Windows**. Download both files in separate downloads.
4. Place the files on your Windows system where they will be easy to locate and install them from that location as instructed in steps 4 and 5.



## STEP 2: CONNECT THE PEGASUS2 TO YOUR WINDOWS COMPUTER

Insert one end of a Thunderbolt cable into the Thunderbolt port on the Pegasus2 and connect the other end of the cable to a Thunderbolt port on your computer. Make sure the cable connector is oriented correctly to the port on both the Pegasus2 and the computer. It should fit easily in place when correctly positioned.

*Pegasus2 M4 connected to Windows computer*



## STEP 3: POWER ON PEGASUS2

Follow these steps to connect the power cord and power on the Pegasus2.

1. Attach the power cord on the back of the Pegasus2 unit. (See page 4 to see an illustration of the back of device)
2. Plug the other end into a power source.
3. Press the Power Button. (See illustration of front of device below).

You will observe that the **Power Button** LED turns orange.

It takes about 30 seconds to boot the Pegasus2 unit. When fully booted:

- The Power Button LED turns blue.
- The drive carrier Power/Status LEDs turn blue.

### *Pegasus2 boot up LED behavior*



## STEP 4: INSTALL DRIVER

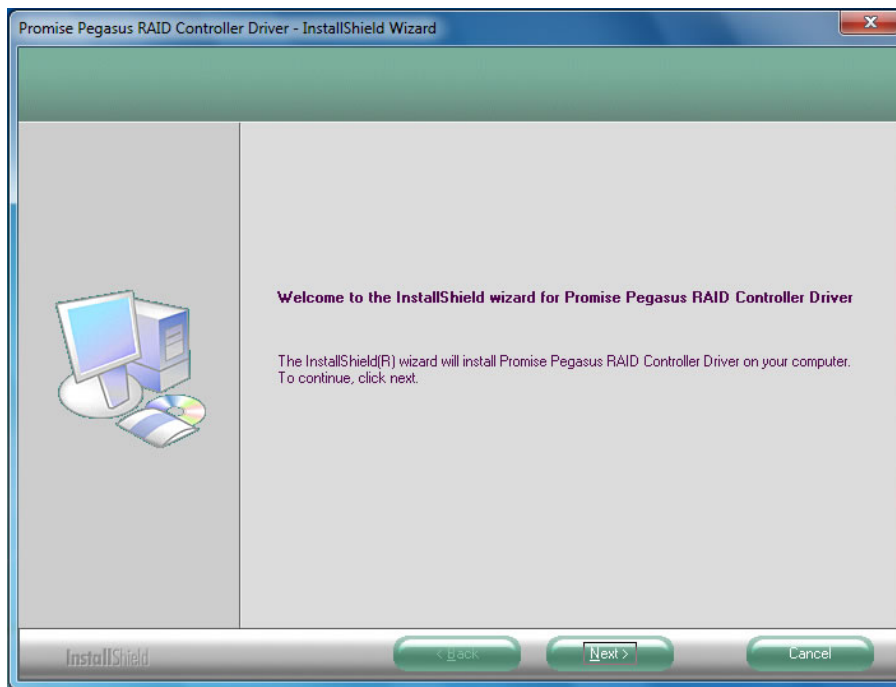
Locate the driver file you downloaded in Step 1 and follow the instructions in the InstallShield Wizard to install the PROMISE RAID Controller driver. It will be necessary to restart the computer after to complete the installation.



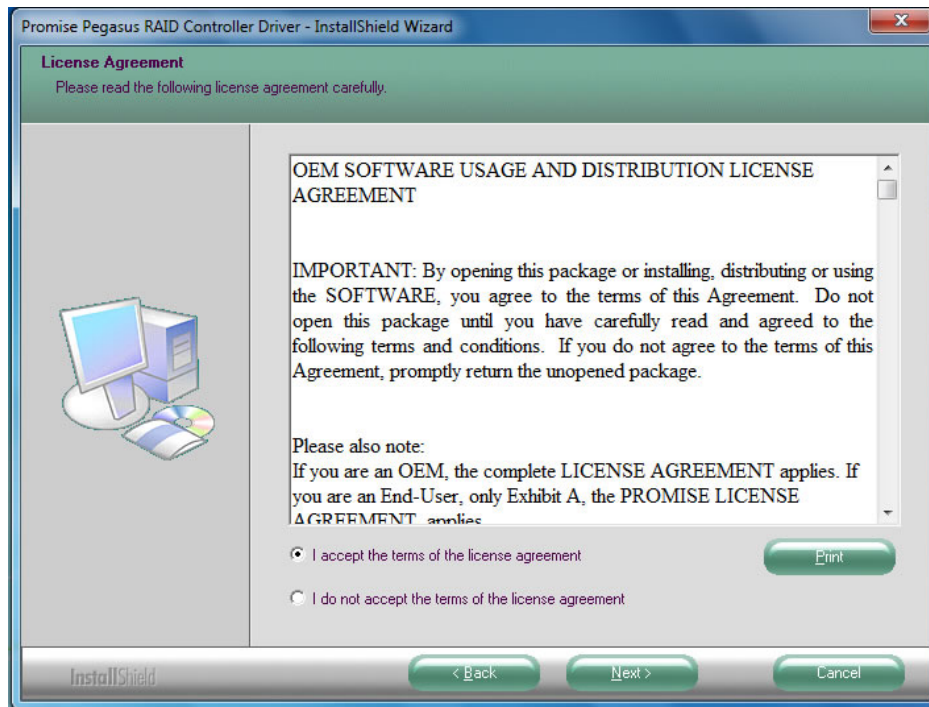
### Note

The procedure installing the driver is identical in Windows 7 and Windows 8.

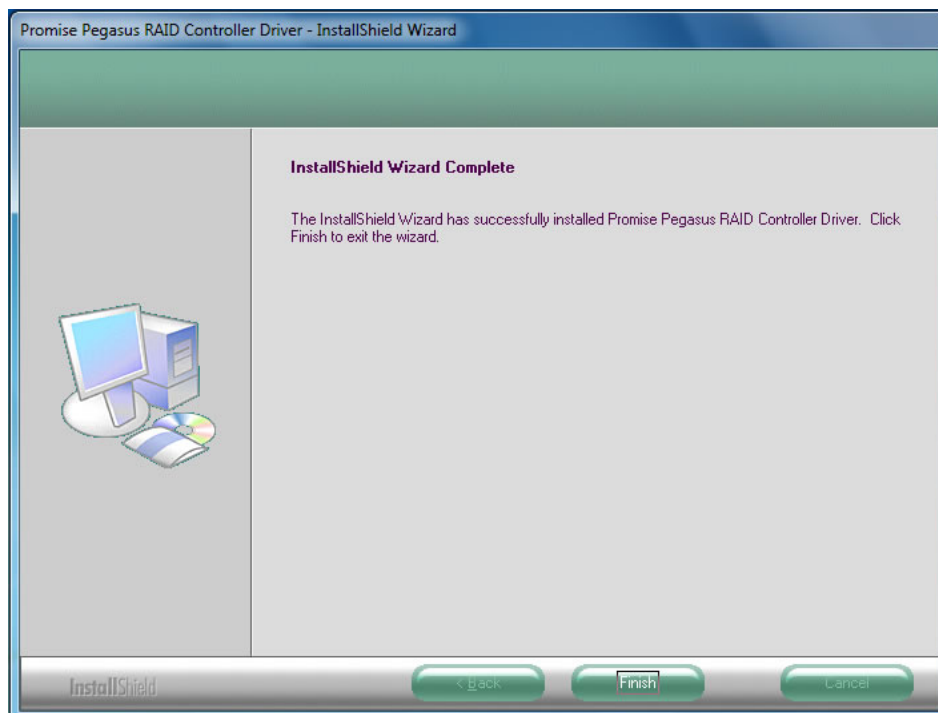
1. Double-click on the zipped file for installing the driver, the file name begins with “PegasusRAID\_WinDrv\_Installer” followed by the version number. The InstallShield Wizard appears. Click **Next** to begin the installation.



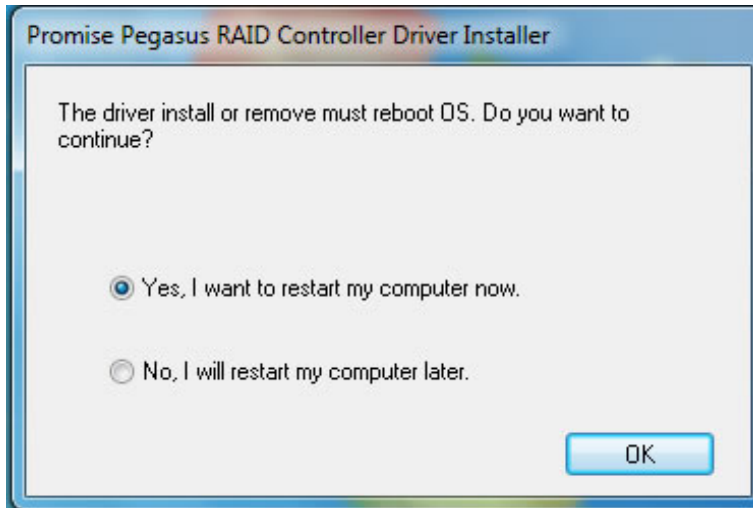
- The License Agreement appears. Click to select the “I accept the terms of the license agreement” option if you accept, and click on **Next** to continue.



- You are informed that the driver has been installed successfully. Click on **Finish** to continue.



4. A message prompt appears informing you that a system restart is necessary, the “Yes, I want to restart my computer now” option is selected by default. Click **OK** to restart now, otherwise choose the “No, ...” option and restart later. The Pegasus2 cannot be used until you reboot the computer.



**WARNING**

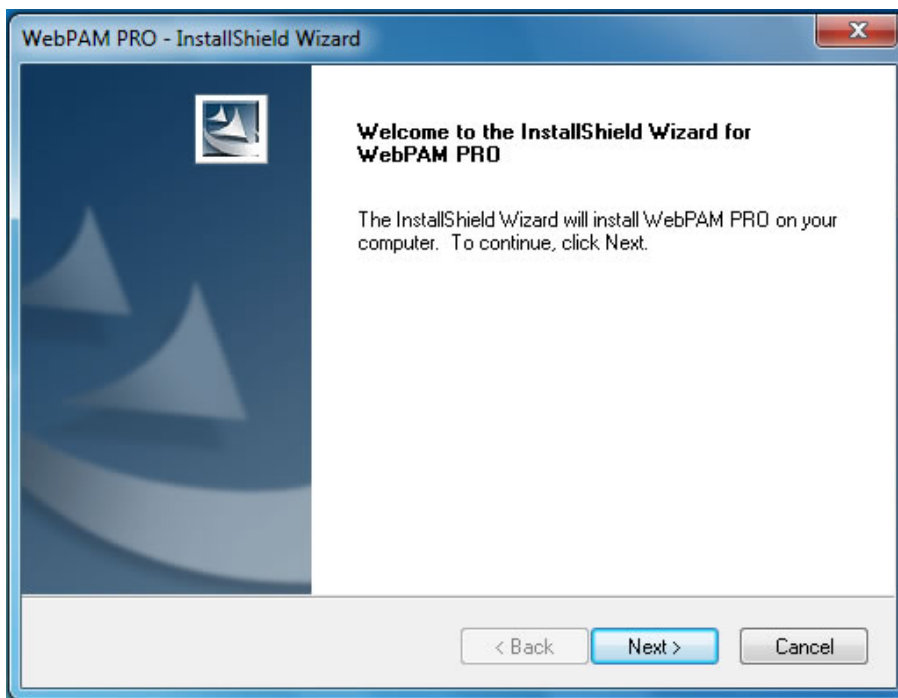
**DO NOT** disconnect the Thunderbolt cable while Windows is running. To safely disconnect the Thunderbolt cable while the computer is running, please read “Safely Remove Pegasus2 from Windows” on page 24.

## STEP 5: INSTALL SOFTWARE

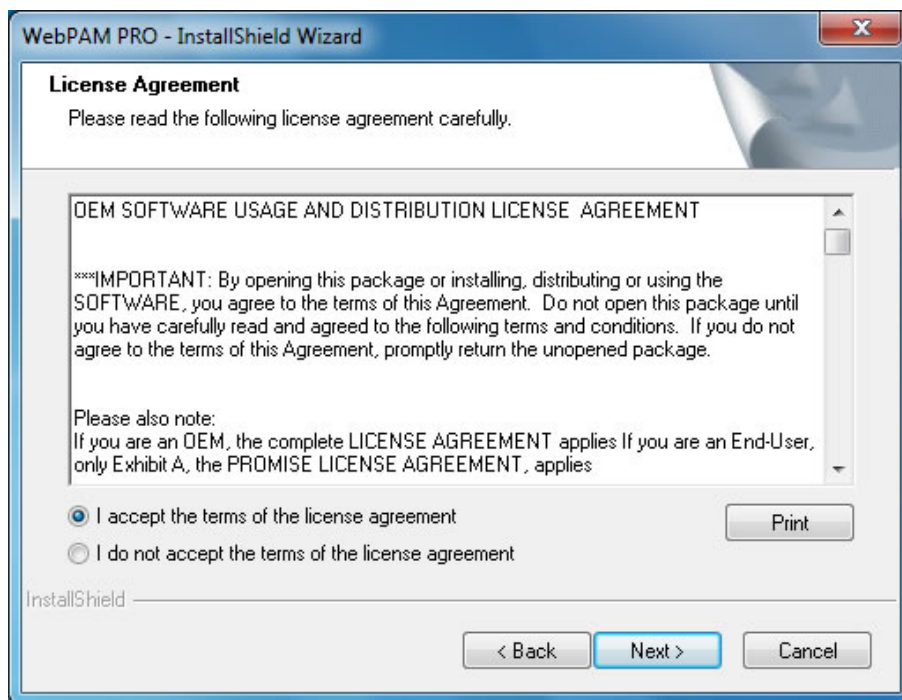
Follow the instructions in this section to complete the installation of the Pegasus2 on your Windows computer. You need to install WebPAM PRO software used for device management and administration.

Locate the Installation program file downloaded previously in Step 1 and follow the instructions in the InstallShield menu to install WebPAM PRO.

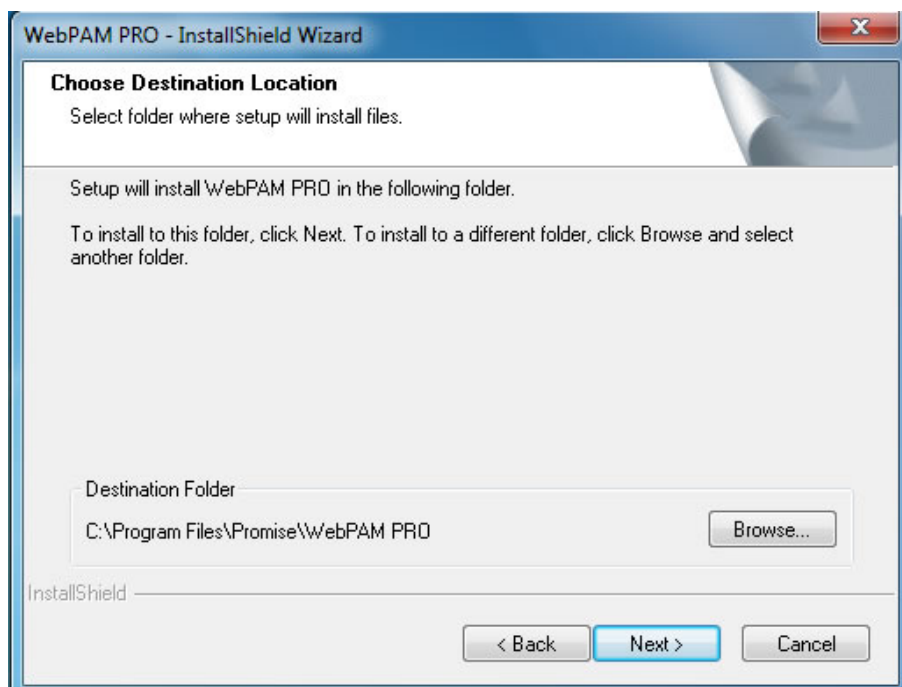
1. Double-click on the zipped file for installing WebPAM PRO, the file name begins with "PegasusRAID\_WebPAM\_PRO" followed by the version number. The InstallShield Wizard for WebPAM PRO appears. Click on **Next** to begin installation.



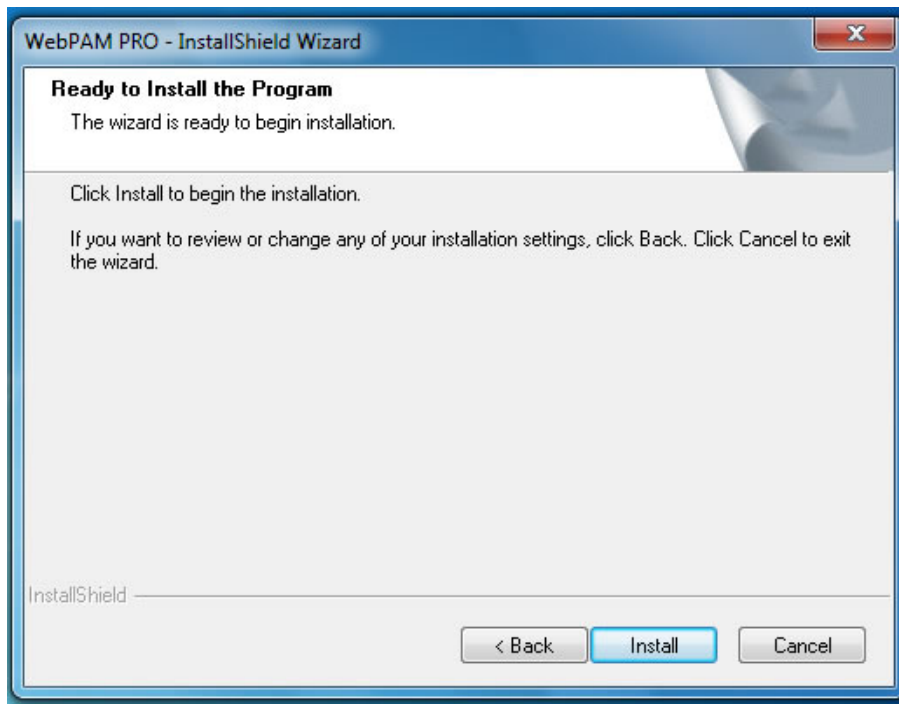
2. The License Agreement appears. Click to select the “I accept the terms of the license agreement” option if you accept, and click on **Next** to continue.



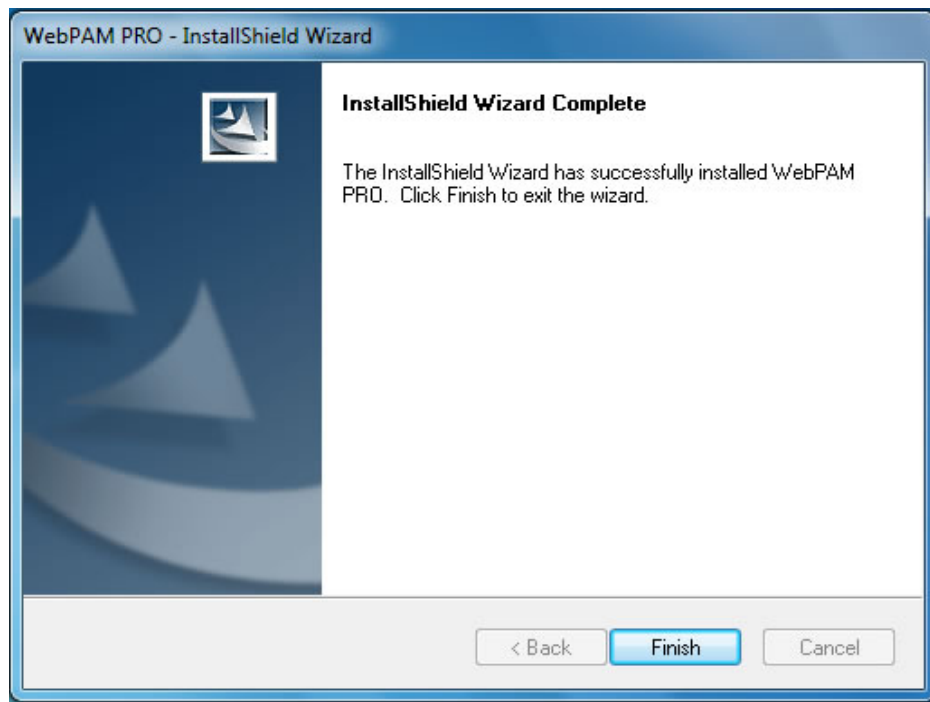
3. Choose where to put the software on your computer. Click **Browse** to choose a specific location, or click **Next** to accept the default destination. Click **Next** to continue.



4. The program is ready to be installed in the chosen location. Click **Install** to begin.



5. Installation of WebPAM PRO is completed. Click **Finish** to close the InstallShield Wizard.



## **STEP 6: FORMAT PEGASUS2 WITH WEBPAM PRO**

Now you are ready to format the Pegasus2 with a the NTFS file system for use as a direct attached storage system with your Windows computer. Use WebPAM PRO to format the RAID array and perform other administrative functions including changing the type of RAID. For information on the other tasks and functions of WebPAM PRO, please read the product manual. For the purpose of this installation guide, only the basic setup using the default PROMISE Hardware RAID 5 array is described. This type of RAID provides the best balance of performance and data safety. For more information on other RAID types, please read the product manual

**DO NOT use the Windows Disk Manager** to change the RAID on the Pegasus2. Any changes to the RAID array must be done using WebPAM PRO.

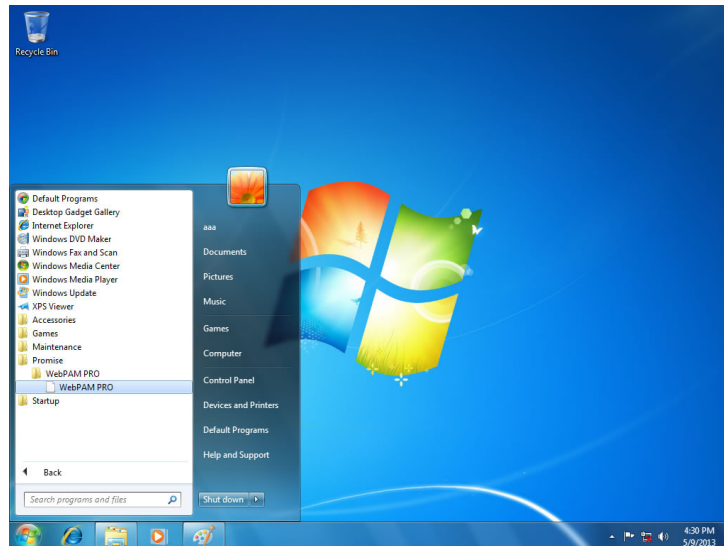
Follow the instructions below for the Windows OS you are running:

- Windows 7 users, see “Format Pegasus2 with Windows 7” on page 15.
- Windows 8 users, see “Format Pegasus2 with Windows 8” on page 19

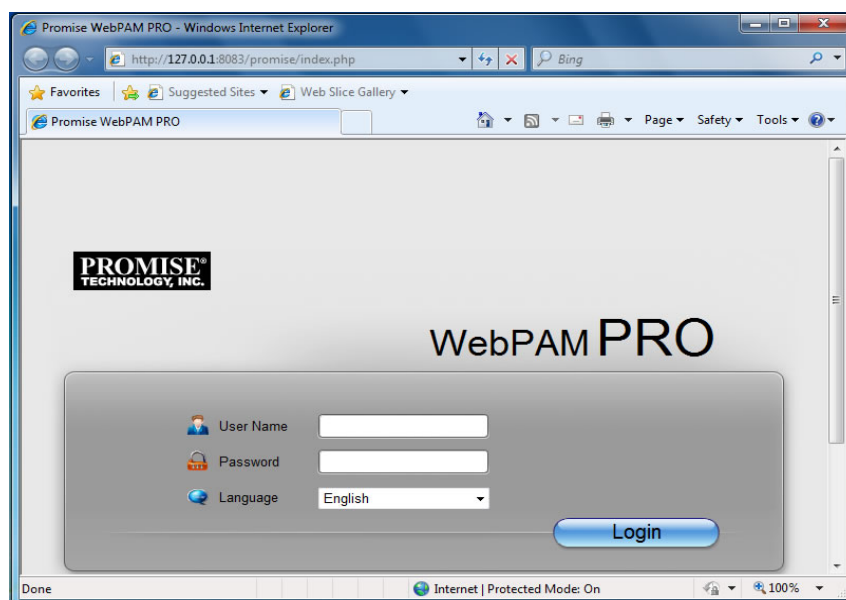
## FORMAT PEGASUS2 WITH WINDOWS 7

Windows 7 users follow the steps listed below to launch Web PAM PRO and format the RAID:

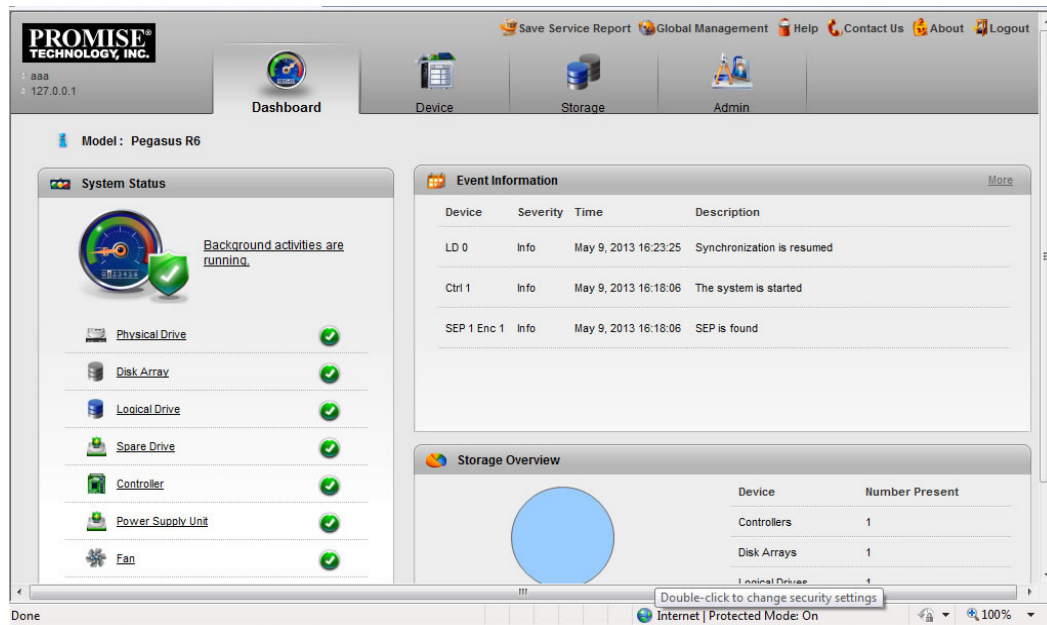
1. To launch WebPAM PRO from the Windows desktop, double-click on the WebPAM PRO icon located your Program Files folder. The path is **Program Files > Promise > WebPAM PRO > WebPAM PRO**.



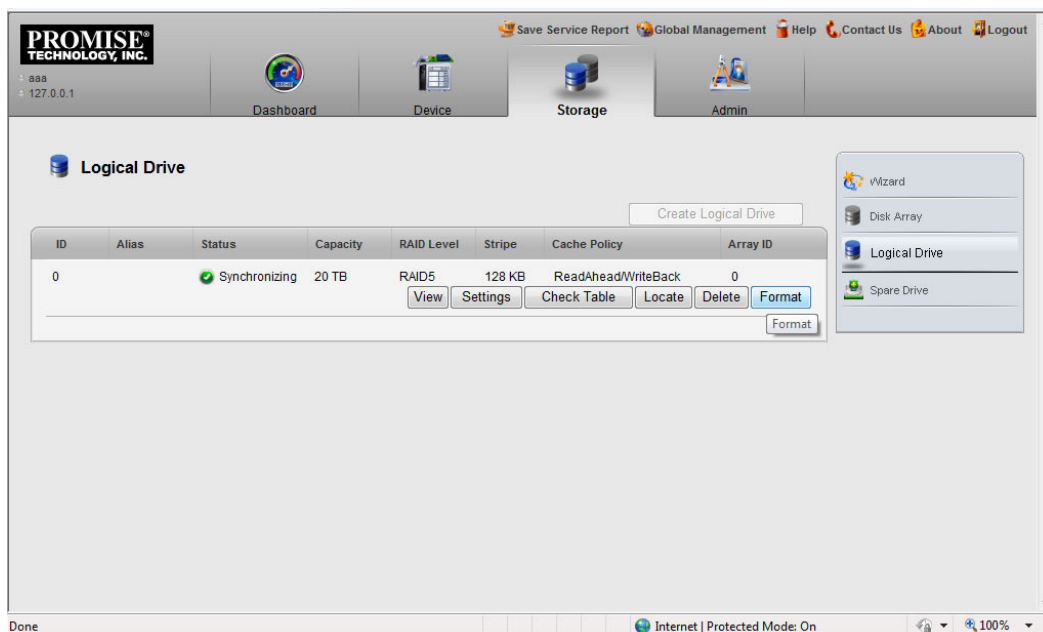
2. The login page appears. The **User Name** and **Password** used for logging in is the same as the Windows OS user login user name and password. Type your **Windows User Name** and **Windows Password** and click the **Login** button.



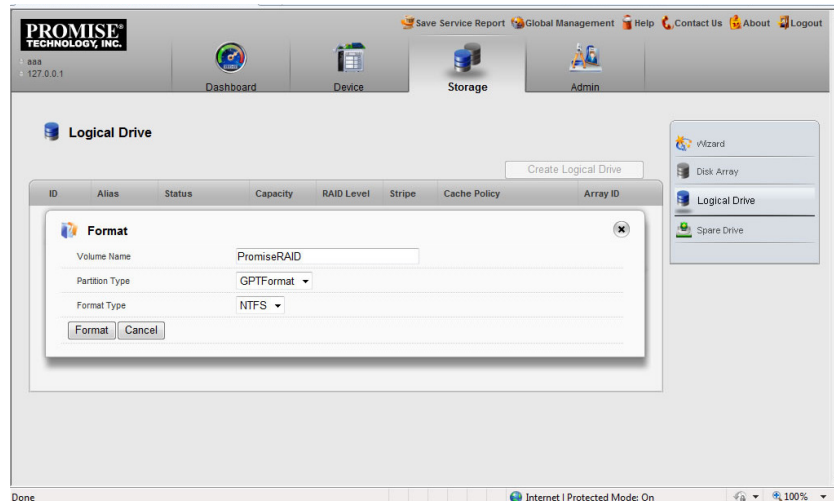
- After logging in, the WebPAM PRO **Dashboard** menu appears. Use this menu later to view a summary of the device status. First you need to format the file system for the Pegasus2.



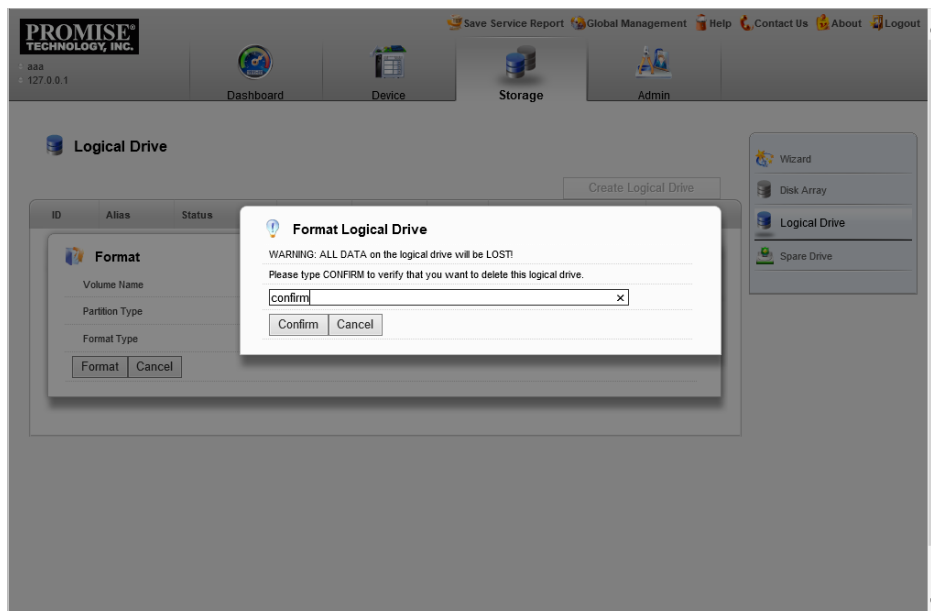
- Click on the **Storage** menu tab near the top of the menu. Then click on the **Logical Drive** menu button to view the Logical Drive menu. Notice in the middle of the menu a description of the RAID array that is already setup. The default setup is a RAID 5 using all the hard disks. If you want to change this, please see the product manual. Otherwise, to begin using the Pegasus2 right away, click on the **Format** button to begin the formatting procedure.



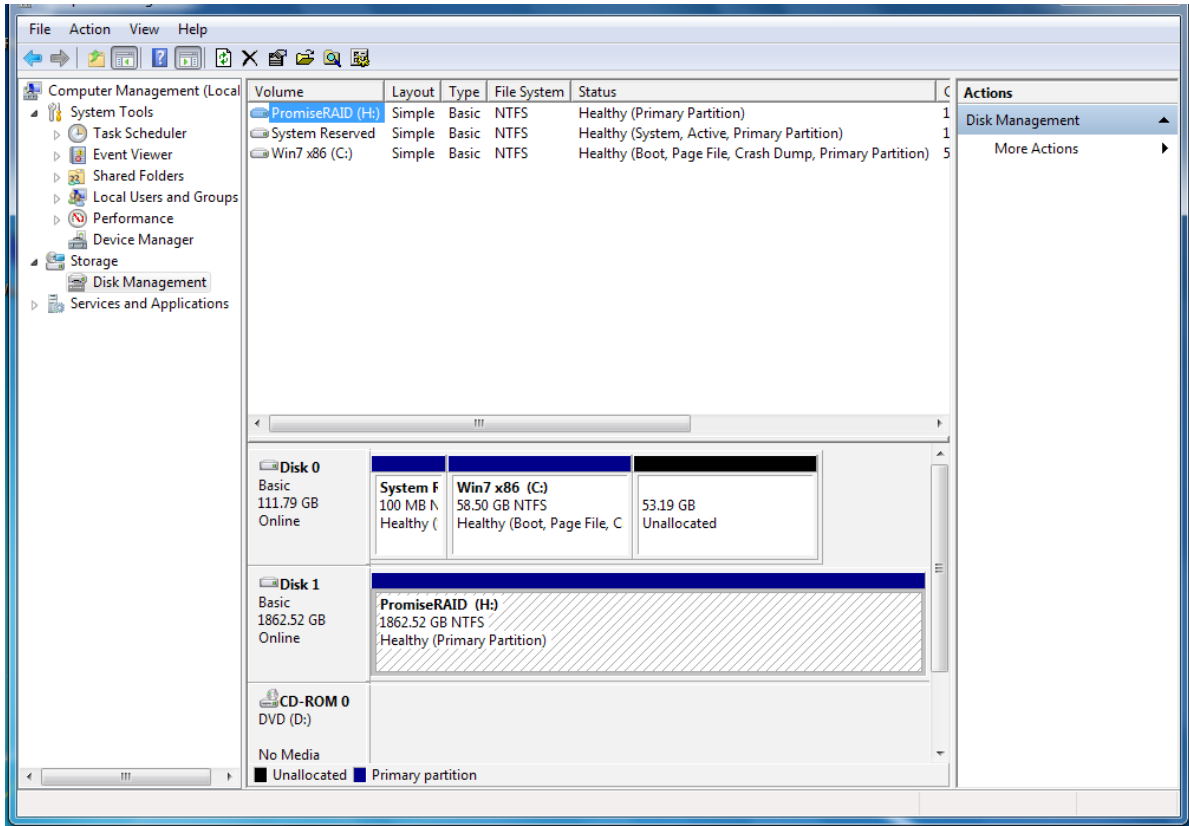
- The formatting options appear in a new menu. You can type in a different name for the Volume or leave the default PromiseRAID. Most users should use the **Partition Type** set to the default *GPTFormat*. The other Partition Type option, *MBRFormat* (master boot record) does not support Logical Drives greater than 2 TB. The Format Type is set to NTFS, the standard Windows file system. Click **Format** to start formatting the array.



- In order to safeguard against unintended changes to the RAID setup or file system, the Pegasus2 requires that you confirm your decision to begin formatting the drives. To continue formatting, type **confirm** in the space provided and click on the **Confirm** button.



- When the array is finished formatting, Windows will alert you that a New Volume has been installed. You can see the New Volume in Windows Disk Manager.



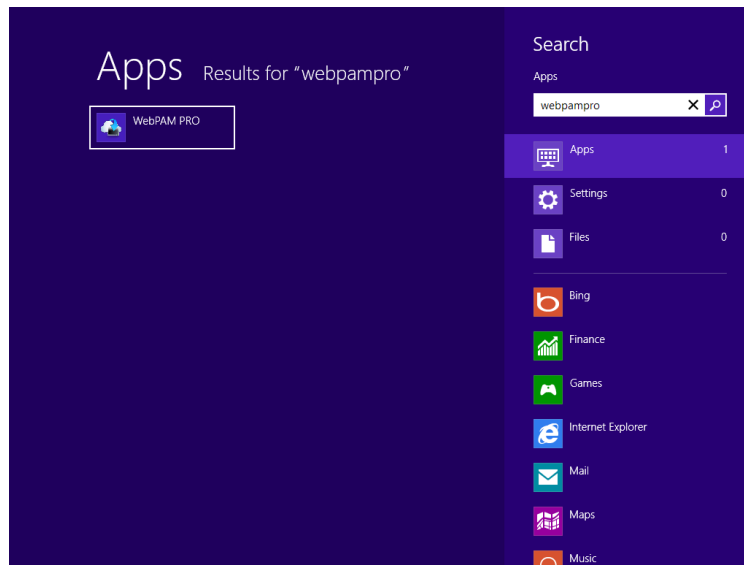
- Make sure you check the firmware version of the Pegasus2 and update it if needed. Go to "Step 7: Check firmware version with WebPAM PRO" on page 23.

## FORMAT PEGASUS2 WITH WINDOWS 8

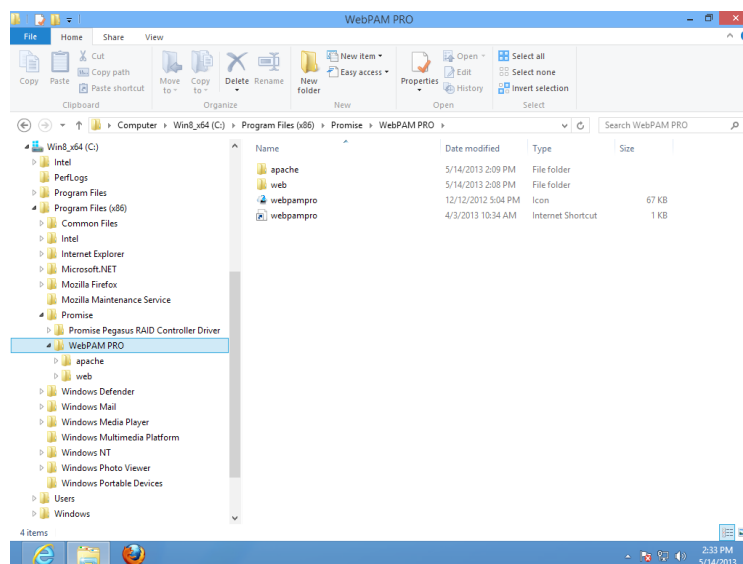
Windows 8 users, follow the steps listed below to launch Web PAM PRO and format the RAID:

1. Locate WebPAM PRO and launch it. You can either do a Search of your Apps to find the software shortcut, or find it the Program Files folder, use the path **Program Files > Promise > WebPAM PRO > WebPAM PRO**.

### Search Apps for shortcut



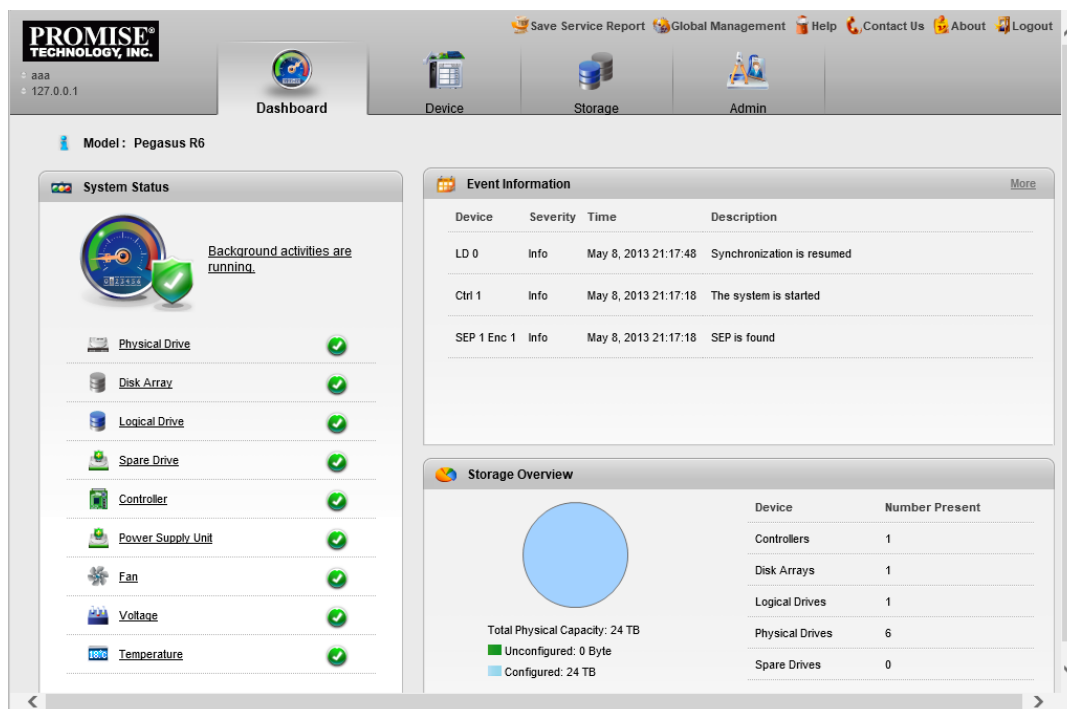
### Locate in Program Files folder



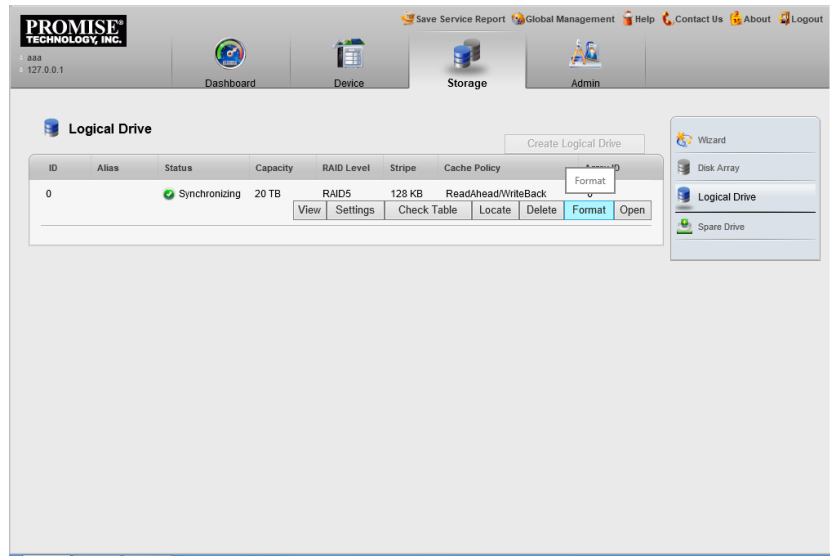
- The login page appears. The **User Name** and **Password** used for logging in is the same as the Windows OS user login user name and password. Type your **Windows User Name** and **Windows Password** and click the **Login** button.



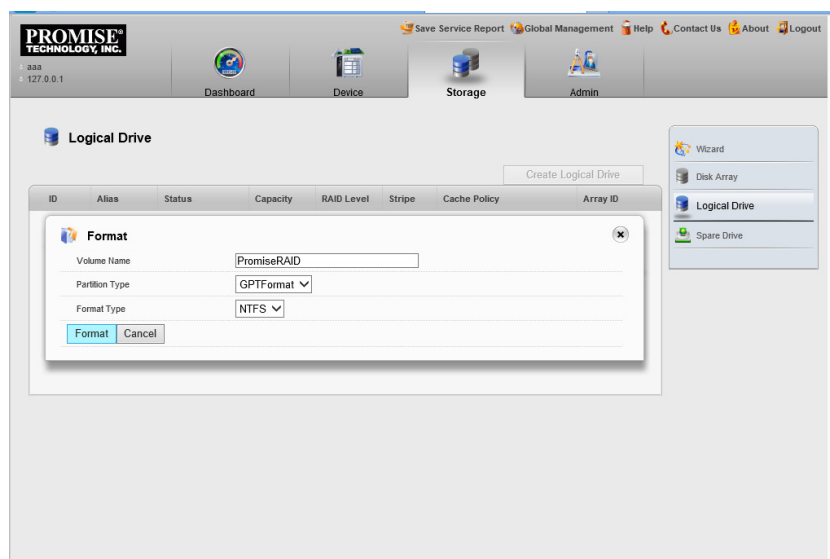
- After logging in, the WebPAM PRO **Dashboard** menu appears. Use this menu later to view a summary of the device status. First you need to format the file system for the Pegasus2.



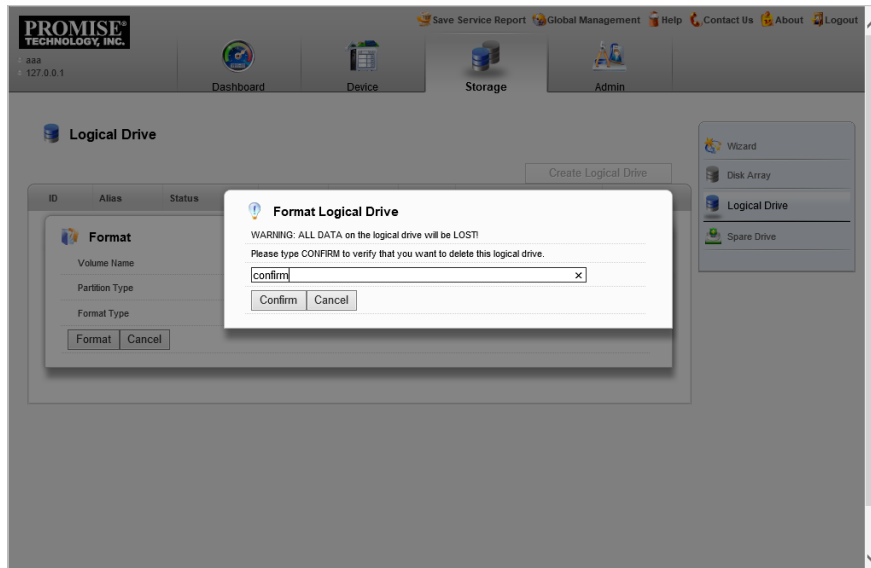
- Click on the **Storage** menu tab near the top of the menu. Then click on the **Logical Drive** menu button to view the Logical Drive menu. Notice in the middle of the menu a description of the RAID array that is already setup. The default setup is a RAID 5 using all the hard disks. If you want to change this, please see the product manual. Otherwise, to begin using the Pegasus2 right away, click on the **Format** button to begin the formatting procedure.



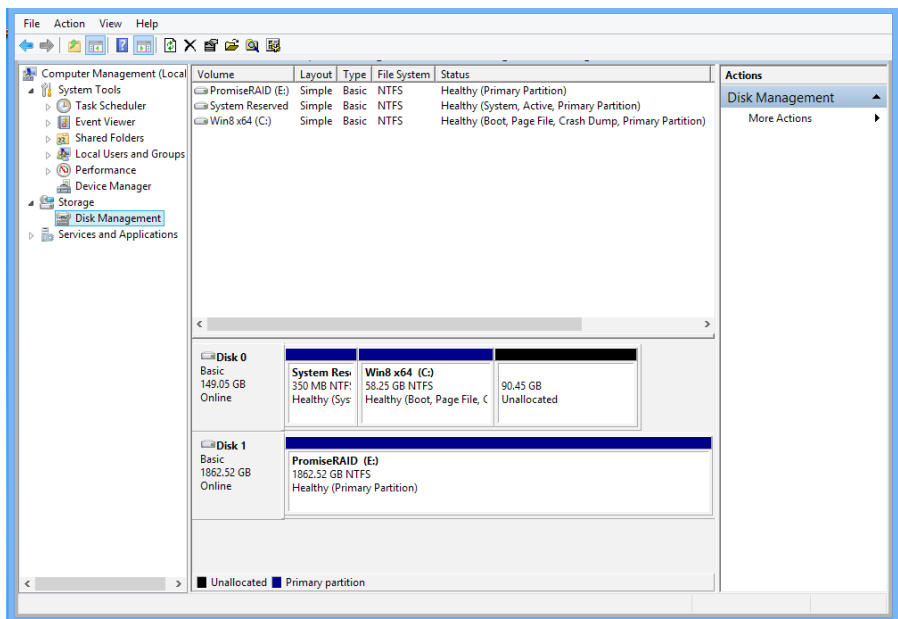
- The formatting options appear in a new menu. You can type in a different name for the Volume or leave the default PromiseRAID. Most users should use the **Partition Type** set to the default *GPTFormat*. The other Partition Type option, *MBRFormat* (master boot record) does not support Logical Drives greater than 2 TB. The Format Type is set to NTFS, the standard Windows file system. Click **Format** to start formatting the array.



6. In order to safeguard against unintended changes to the RAID setup or file system, the Pegasus2 requires that you confirm your decision to begin formatting the drives. To continue formatting, type **confirm** in the space provided and click on the **Confirm** button.



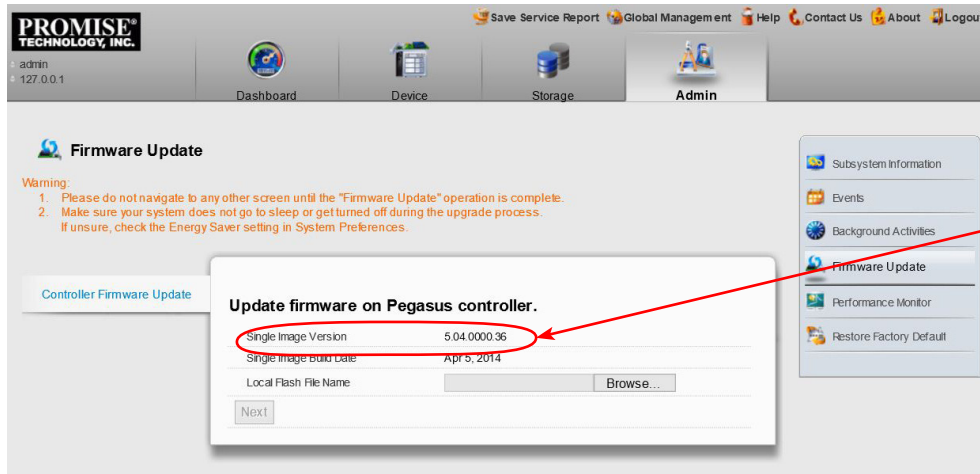
7. When the array is finished formatting, Windows will alert you that a New Volume has been installed. You can see the New Volume in Windows Disk Manager.



8. Make sure you check the firmware version of the Pegasus2 and update it if needed. Go to "Step 7: Check firmware version with WebPAM PRO" on page 23.

## STEP 7: CHECK FIRMWARE VERSION WITH WEBPAM PRO

It might be necessary to update the firmware on the Pegasus2. If you do not know the firmware version, use WebPAM PRO to check the firmware version. Go to **Admin>Firmware Update** to see the **Single Image Version** number. Follow the instructions below to update the firmware before using the Pegasus2.



The Single Image Version must be 5.04.0000.36 or later.



### Important

If the **Single Image** firmware version is **5.04.0000.36** or later, it is not necessary to update. If the firmware is an earlier version (5.04.0000.35 or lower number), you need to update the firmware to operate in Windows.

## UPDATING FIRMWARE

The update procedure should be done before using the Pegasus2 with your Windows computer. Make sure to download the latest firmware from the PROMISE website at [www.PROMISE.com/support/download.aspx](http://www.PROMISE.com/support/download.aspx) and place the .img file on your computer.

To update the controller firmware:

1. From the **Admin** menu tab, choose **Firmware Update**. Check the **Single Image Version** number. If the version number is 5.04.0000.36 the firmware does not need to be updated. If the number is 5.04.0000.35 or lower, continue with the firmware update procedure.
2. Click on the padlock icon to unlock the menu, and type in the password for your computer when the prompt appears.
3. Click the **Browse** button and locate the .img file you downloaded from PROMISE.
4. Click the **Next** button.
5. In the Confirmation box, type the word "confirm" in the field provided and click the **Confirm** button.
6. The process will take several seconds. When it is completed, you will be prompted to restart the computer. Restart your computer and continue to use the Pegasus2.

# SAFELY REMOVE PEGASUS2 FROM WINDOWS

To disconnect the Pegasus2 drive from your Windows computer while the computer is running, it is necessary to perform a simple procedure to safely disconnect the storage volume from Windows. If you remove the Thunderbolt cable while the operating system is running, data on the Pegasus2 might be damaged.

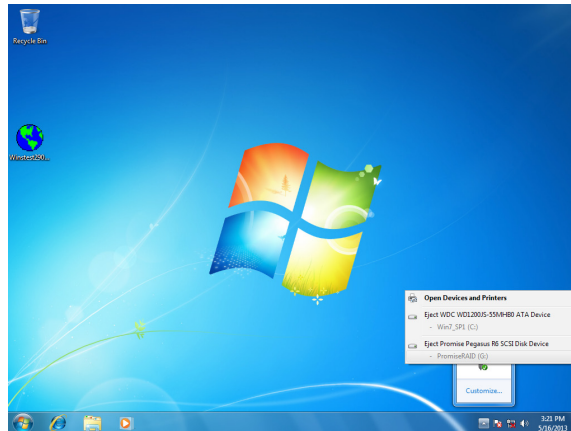
If the computer has been shutdown, it is safe to disconnect the Thunderbolt cable.

Alternatively, you can shutdown the Pegasus2. See “Shutdown the Pegasus2” on page 26.

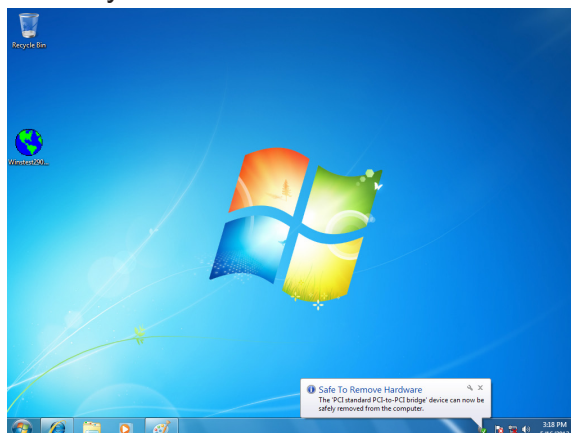
## SAFELY REMOVE PEGASUS2 ON WINDOWS 7

To disconnect the Pegasus2 from a Windows 7 computer:

1. Click on the attached drives icon in the System Tray to reveal the eject options and choose the *Eject Promise Pegasus* option.



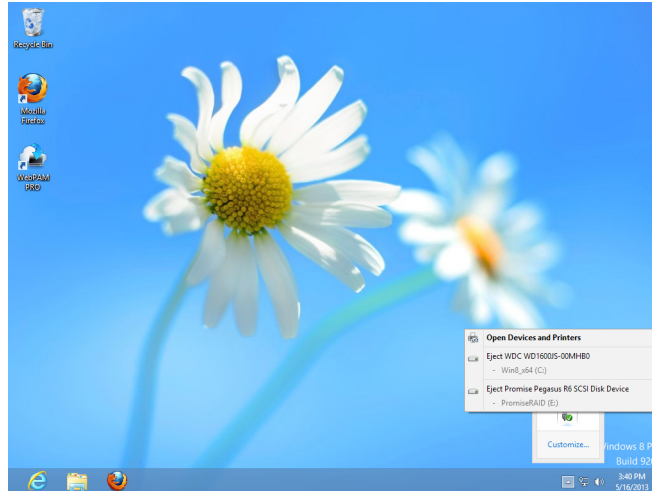
2. Wait for the message to appear telling you it is safe to remove the Pegasus2. You can now safely power off the system or disconnect the Thunderbolt cable.



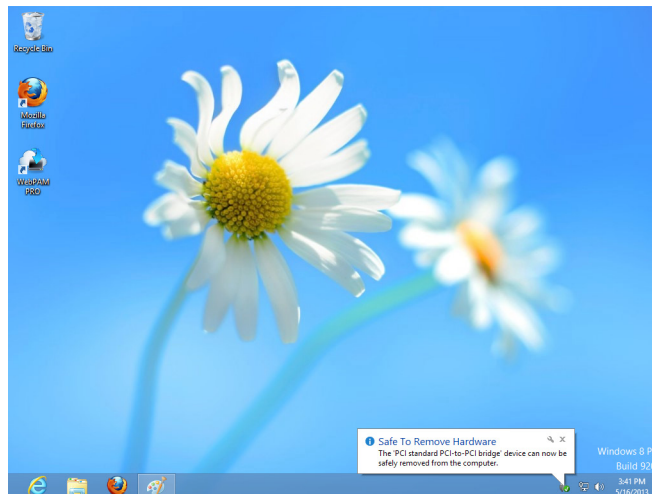
## SAFELY REMOVE PEGASUS2 ON WINDOWS 8

To disconnect the Pegasus2 from a Windows 8 computer:

1. Click on the attached drives icon in the System Tray to reveal the eject options and choose the *Eject Promise Pegasus* option.



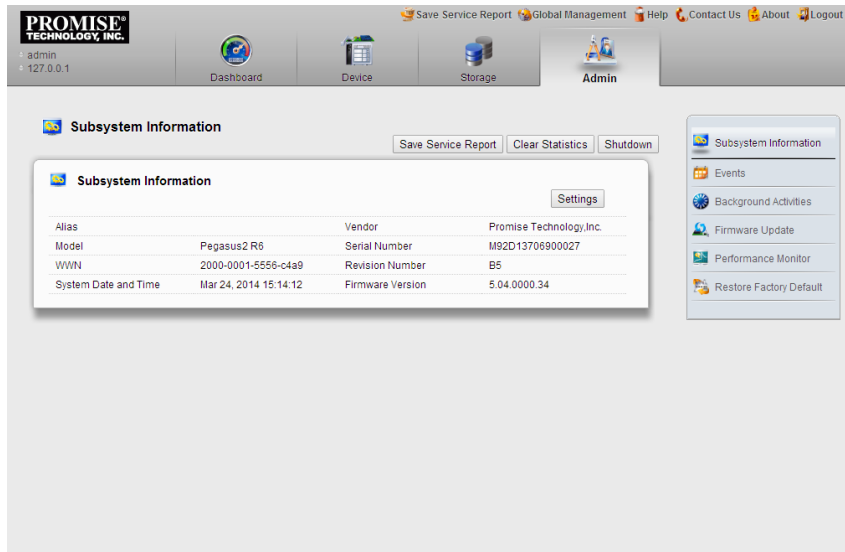
2. Wait for the message to appear telling you it is safe to remove the Pegasus2. You can now safely power off the system or disconnect the Thunderbolt cable.



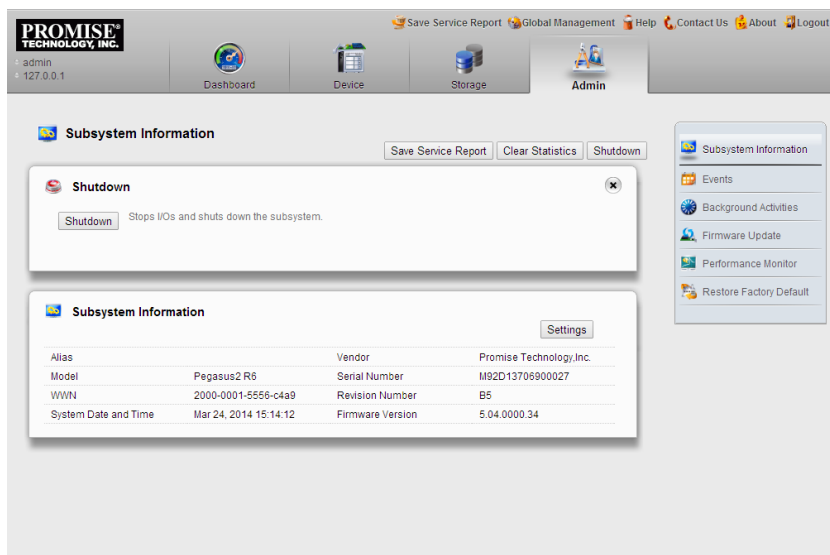
# SHUTDOWN THE PEGASUS2

To shutdown the Pegasus2 on either Windows 7 or Windows 8:

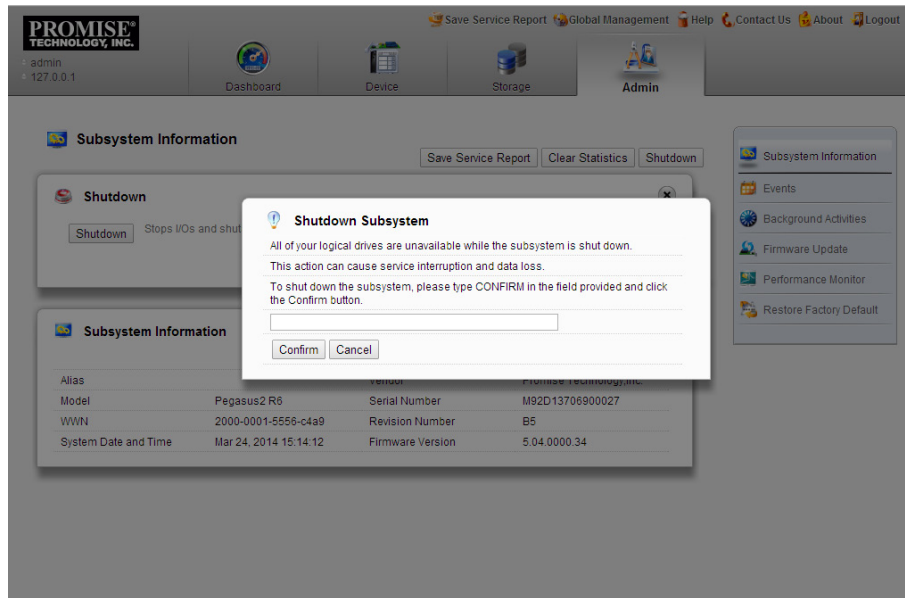
1. Open WebPAM PRO and click on the **Admin** menu tab. In the **Subsystem Information** menu, click on the **Shutdown** button.



2. Click on the **Shutdown** button.



- To prevent accidental shutdown, you must confirm that you want to shutdown the system. Type **confirm** in the space provided and click on the **Confirm** button.



- A message appears informing you that the shutdown process will take a few minutes. If you want to move the device, wait until the system is completely powered off before disconnecting the power cord.

